



A National Connection for Self-Advocates



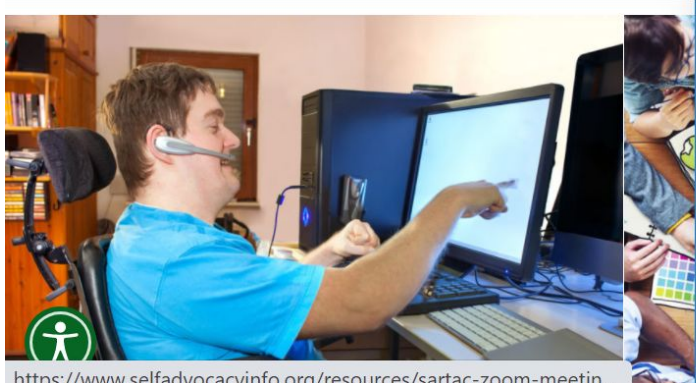
<https://selfadvocacyinfo.org/>



Self Advocacy Resource and
Technical Assistance Center



Home About ▾ Events Resources ▾ Self Advocacy Support ▾ Contact Us

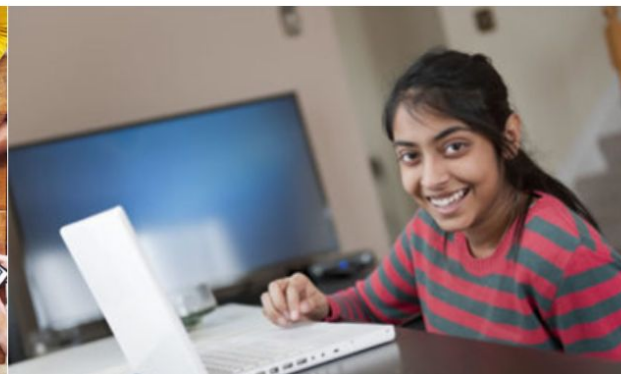


<https://www.selfadvocacyinfo.org/resources/sartac-zoom-meetin...>

Current Issues
Resources

Organization
Resources

SARTAC Zoom
Meetings



Two Clicks - #1 Click on Resources then #2 Click on SARTAC Zoom Meetings

Green Mountain Self-Advocates and SARTAC www.selfadvocacyinfo.org

Why should I vote?

- Voting is an important right. Laws affect our lives. Voting lets us have a say in what laws are made. This is important for people with disabilities!
- We can vote for people who we agree with, and then they will help pass laws that we agree with.
- Voting is just as important for people with disabilities as it is for everyone else.





**In small groups
talk about
what your
self-advocacy
group is doing
about voting!**

How to check if you are registered to vote?

1

Visit [Can I Vote](#) and select "voter registration status."

2

Choose your state. You will be taken to a page on your state's election website.

3

Check to see if you are registered.



Important

Check your registration information **before** your state's registration deadline to register to vote. That could be **up to 30 days before the election**. This gives you time if you need to re-register or make changes.

Welcome To Can I Vote - <https://www.nass.org/can-i-vote>

Need help with voting? You've come to the right place.

[Register To Vote](#)

[Voter Registration Status](#)

[Find Your Polling Place](#)

[Valid Forms of ID](#)

[Absentee and Early Voting](#)

[Overseas Voters](#)

[Election Officials Directory](#)

[Become a Poll Worker](#)



Find Out What's On Your Ballot

- We vote for people.
- We can vote on laws
- We vote on how much money goes to schools or groups.

Go to the website **Ballotpedia**

Type your address in. It will give you a list of candidates and issues that will be on your ballot when you vote.

You can also use **Vote411**

Sample Ballot Lookup

Enter the address where you are registered to vote. ⓘ

VIEW MY BALLOT

Who Should I Vote for?



Side-by-Side Comparison Chart



Get The Facts.

**Nonpartisan Or Non-bias
Source Gives You The Facts
– NO opinions**

This one is a easy way to check on the people running for president

<https://2024election.procon.org/side-by-side-comparison-chart/>

Another one - Vote Smart - <https://justfacts.votesmart.org/>

Endorsements and Ratings can help you decide



HAVE OUR BACKS

MYVOTESMART SIGN UP

Enter a politician's name or your address

THE FACTS ▶

BIO

VOTES

POSITIONS

RATINGS

SPEECHES

FUNDING



Kamala Harris' Ratings and Endorsements

Office: [Vice President](#), Democratic President of the Senate

On The Ballot: Running, Democratic for President with Tim Walz

True or False?

Everything you see on Facebook about politicians is true	You can find out about candidates by watching a debate.	To learn about a candidate, ask your neighbors, coworkers, friends, and family.
The <u>League of Women Voters</u> has non-bias information	Everything on a candidate's website is true	If a person is good looking and dresses nice you should vote for them
You can find out about candidates by watching the local news	It is okay to Vote for all Republicans or all Democrats or all Progressives	If a person was already elected, you should always vote for them again

Voting rights as a person with a disability

- The right to access your polling place
- The right to get assistance to vote. Contact your Town Clerk to request accommodations
- Bring a person of your choice into the voting booth with you for assistance (not your employer or union representative)
- Ask an election official for help with marking your ballot
- Ask an election official to bring a ballot to your car
- Bring a magnifying glass or other devices to help you use the ballot
- Bring a list of candidates into the voting booth to help you
- Ask for another ballot (maximum of 3) if you make a mistake
- Use the [Omniballot tablet accessible voting system](#) at the polls



Ballot Drop-Off Restrictions

- All states offer voters some sort of mail-in ballot (usually called “absentee ballots”) for elections. See our state for information.
- Some states, like Arizona, Georgia, Kentucky, Mississippi, and New Mexico, only allow the voter themselves, an immediate family member, or a caregiver to return an absentee ballot. A few other states restrict absentee ballots even further and only allow returns by the voter themselves. Make sure you check for your state rules.

