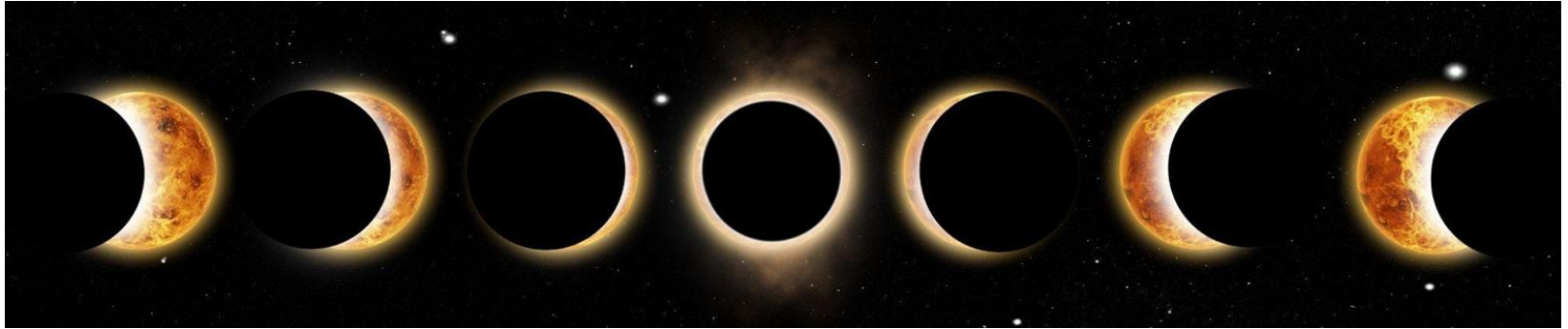


What is an eclipse?



On April 8, 2024, there will be a solar eclipse.

That means the moon goes in front of the sun. It lasts for about 4 minutes.

There are Different Kinds of Eclipses



Total Eclipse

During a total Solar Eclipse the moon will completely block the sun.



Partial Solar Eclipse

During a partial Solar Eclipse the moon will block part of the sun.

An Eclipse is Happening on April 8, 2024

People in 48 states will see a partial



eclipse.



You can see a total eclipse  in parts of Texas, Oklahoma, Ohio, Arkansas, Missouri, Illinois, Kentucky, Indiana, Pennsylvania, New York, Vermont, New Hampshire, & Maine.

This website helps you find where and when to see the April 8th eclipse.

<https://science.nasa.gov/eclipses/future-eclipses/eclipse-2024/where-when/>

When Looking at the Eclipse



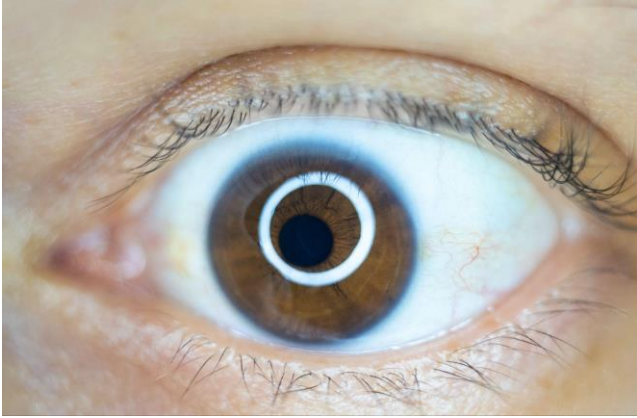
Do

- **Wear Special Eclipse Glasses**
- Always supervise children. Make sure they wear special Eclipse Glasses.
- You can watch the eclipse on a TV or computer.



- Do NOT look at the Sun through sunglasses or prescription glasses. Regular sunglasses are not safe; no matter how dark
- Do NOT look at the Sun through a camera, telescope, binoculars, or cell phone

Looking At an Eclipse Can Be Dangerous!



Looking at the sun during an eclipse will hurt your eyes. You can damage your eyes in less than a second. It can blind you. You will not feel pain right away.

On a sunny day, it's hard to look at the sun. During an eclipse, the sun is covered. So, you might want to look at it, but don't.

When You Get New Eclipse Glasses, Check if They Work Properly



- Use a bright lamp or flashlight to test your Eclipse Glasses. Never try to look at the sun with them the first time.
- Take a good look at the lenses. If you see any scratches or holes, don't use them. It's not safe for your eyes. Instead, throw them away and get new Eclipse Glasses.
- Remember, using Eclipse Glasses with scratches or holes can hurt your eyes. It's better to be safe and protect your eyesight.

Using Eclipse Glasses Safely

- First, make sure to put on your special eclipse glasses before you try to look at the sun.
- When you're done looking, turn away from the sun before taking off your glasses.
- And remember, never take off your glasses while you're still looking at the sun!



How to Know if Your Eclipse Glasses Are Safe?



Beware!

Some people are selling fake eclipse glasses.

For Safe glasses look for **ISO certified**.

Safe glasses say

- ISO 12312-2
- The manufacturer's name and address are printed somewhere on the product.

For more information about who sells safe Eclipse Glasses go to:

<https://eclipse.aas.org/eye-safety/viewers-filters>